

Inter-Mountain Construction Equipment

1265 Factory Circle
Fort Lupton, Colorado 80621
Phone: (303) 857-0327
Fax: (303) 857-0318

Ridges Dam Open House Details

You are invited to an open house in Durango, CO for the Ridges Dam project.

The construction of the Ridges Dam in Durango, Colorado is completed; this aggregate equipment was commissioned in the spring of 2005 and has less than 2,150 operating hours on the total plant. Some items have much less hours. This equipment is available immediately.

Inter-Mountain Construction Equipment has been retained as the exclusive agent to sell all of this equipment.

International Inquires Welcome

Please contact Mickey Jones at (303) 514-1403 email mickeyhk@hotmail.com or Greg Jones at (303) 885-2068 email greg@intermountaincrushers.com for further information.

Dates

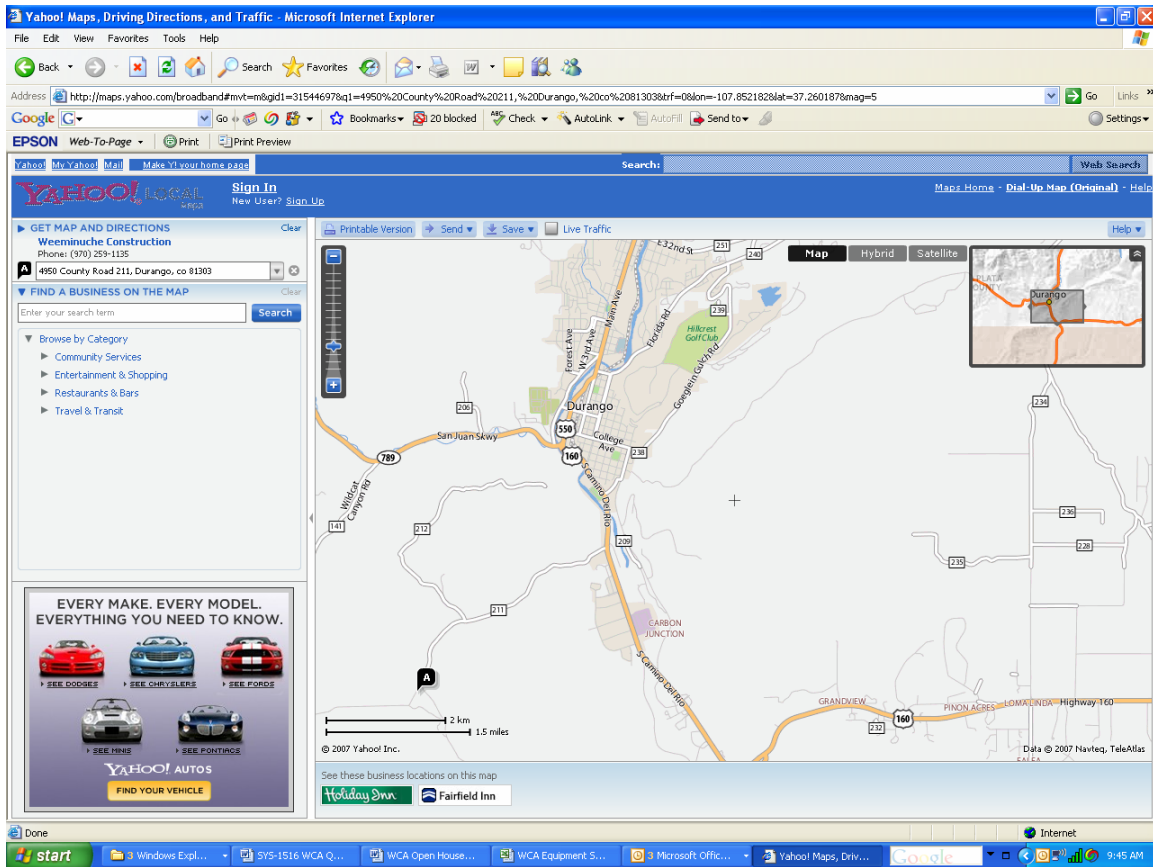
Open House January 24-26, 2008
9:00 am – 4:00 pm Each Day

Map and Visit Instructions

The address for the main office is
Weeminuche Construction Authority
2950 County Road 211
Durango, CO 81303

Please click on the web site below or cut and past into your browser for interactive map.
<http://maps.yahoo.com/broadband#mvt=m&gid1=31544697&q1=4950%20County%20Road%20211,%20Durango,%20co%2081303&trf=0&lon=-107.913036&lat=37.231012&mag=6>

Please follow County road 211 to the main office and park there. We will have 2 vans to bring you into the area. You may need to sign a waiver before entering the site and Steel Toed Boots, Safety Glasses, and Hard Hats are required. We will provide Hard Hats and Safety Glasses for those who need them.



Flights

Commercial Airline Carriers Include;

Delta Airlines	800 221-1212
United Express	800 241-6522
US Airways	800 235-9292

Hotels

Ramada Durango	970 259-1333
Quality Inn	970 259-7900
Double Tree Hotel	970 259-6580
Holiday Inn	877 684-9381
	970 247-5393
Durango Inn	970 247-3251
Marriott	970 259-6200

Car Rental

Car Rentals are available in the air terminal through;
Avis, Budget, Dollar, Hertz, National

Other

If you have extra time you may want to visit the following;
Durango and Silverton Narrow Gauge Railroad
Durango Mountain-Purgatory Ski Areas

Wolf Creek Ski Area
Telluride Ski Area
Mesa Verde National Park

Tear Down and Shipping of Equipment

We will tear down and load the equipment for you. Shipping is the customer's responsibility but we do have 5 national carriers who we can work with to get you the best rate.

Shaelyn Gilbert
Action Transportation, Inc.
800-934-4038
sgilbert@actiontransportation.net

Ricky Robbins
Advanced Transportation
phone 888-857-1811
fax 541-857-1817
ricky@advancedinc.net

ROANN SCHOTT
TUREK TRUCKING
LOGISTICS
RSCHOTT@TUREKCOMPANIES.COM
800-775-4413
406-721-8455 EXT 105
FAX 406-721-8440

Dave Silva
262-650-7070
800-886-7799
FAX 262-650-7080
dsilva@EVANSTRANS.com

EQUIPMENT AVAILABLE

All Equipment has support structure, chutes, and legs

Crushers

P-8 Nordberg HP400 Cone Crusher on Skid Mounted Support Structure

S-14 Nordberg Barmac B-Series B9100 VSI Crusher on Skid Mounted Support Structure, Each Structure includes One (1) Conveyor Bag house

S-15 Nordberg Barmac B-Series B9100 VSI Crusher on Skid Mounted Support Structure, Each Structure includes One (1) Conveyor Bag house

Loading and Surge Hoppers and Feeders

P-1 150 "Live" Ton Primary Dump Hopper, 52" x 24' HR Vibrating Grizzly Feeder, Hopper & Feeder Support Structures, Chutes, Platforms, Platform Rails, and Stairs to grade, Including a Splitter Bin w/ One (1) "Screw" type Clamshell Gate.

S-8 70-ton Crusher Feed Distribution Bin with two Syntron Model F-480 feeders

M-4 150' Surge Reclaim Tunnel with 30"x215' Tunnel Reclaim Conveyor and two Syntron Model F-480 feeders with Beltway belt Scale

P-2 Dozer Trap with Front Wall and 36"x30' Belt Feeder

S22 Splitter Bin with Syntron Vibrating Feeders

T28 Splitter Bin with Syntron Vibrating Feeders

Screens

P4 8 x 20 Metso XH TD Scalping Screen (Duel-25 HP), 60" Under Screen Conveyor and Structure

P5 8 x 20 Metso XH TD Scalping Screen (Duel-25 HP), 60" Under Screen Conveyor and Structure

P7 8 x 20 Metso XH TD Scalping Screen (Duel-25 HP), 60" Under Screen Conveyor and Structure

S18 8 x 20 Metso XH TD Scalping Screen (Duel-25 HP), 60" Under Screen Conveyor and Structure

S19 8 x 20 Metso XH TD Scalping Screen (Duel-25 HP), 60" Under Screen Conveyor and Structure

P9 7x20 Metso TD Horizontal Screen with 60' Underconveyor

T25 7x20 Metso TD Horizontal Screen with Water Manifold, Spray Bars and Underscreen Flume

Wash Plant Equipment

T23 7x20 Metso TD Horizontal Screen with Water Manifold, Spray Bars and Underscreen Flume Mounted Over GreyStone Twin 44"x32' Dewatering Screw

T30 7x20 Metso TD Horizontal Screen with Water Manifold, Spray Bars and Underscreen Flume Mounted Over GreyStone Twin 44"x32' Dewatering Screw

T35 Twin GreyStone 54"x35' Dewatering Screw

T29 Twin GreyStone 44"x30' Logwasher

Conveyors

C57 Thor Model 140-5 Extendable Radial Stacking Conveyor

C62 Thor Model 140-5 Extendable Radial Stacking Conveyor

The Following Conveyors have Oversize Drives, Bearings and Shafts and 8 have Beltway Belt Scales. All Conveyors are Lattice Frames unless noted. The 30" Conveyors were designed for 900 tph and the 36" conveyors were designed for 1,150 tph.

Qty 7 30"x100' Foldable Pit Portable Shuttle Conveyors with Single Axle

Qty 4 30"x100' Transfer Conveyors

Qty 5 30"x60' Transfer and Stacking Conveyors (two with Metal Detectors)

Qty 1 30"x150' Surge Pile Radial Stacking Conveyor

Qty 2 30"x120' Product Feed Conveyors

Qty 1 30"x150' Feed Conveyor

Qty 16 30" Transfer Conveyors Lengths from 20-70'

Qty 1 30"x80' Product Feed Conveyor

Qty 1 30"x110' Product Transfer Conveyor

Qty 1 30"x220 Product Transfer Channel Frame Conveyor

Qty 1 30"x430' Product Transfer Channel Frame Conveyor

Qty 1 30"x120' Portable Reject Radial Stacking Conveyor

Qty 1 30"x145' Reject Transfer Conveyor

Qty 2 36"x (1) 30' and (1) 60' Transfer Conveyor and Product Discharge Conveyor

Qty 1 36"x73' Product Feed Conveyor with Permanent Magnet

Qty 1 36"x100' Product Feed Conveyor

Qty 1 36"x120' Product Discharge Conveyor

Qty 1 36"x160' Screen Feed Conveyor

Qty 1 36"x145' Transfer Conveyor

Qty 1 36"x100' Fixed Incline Portable Radial Stacker

Electrical

3 Motor Control Centers, Operators Control House

Misc

Slurry Transfer 3" Submersible Pump
MR-200 8" X 6" Slurry Transfer Pump
Slurry Transfer 4" Submersible Pump
MR-250 10" X 8" Slurry Return Pump
12 Station Dust Control Water Spray System w/Tank
Pump Sump Tanks 3-ea.
Plant Power Distribution
H.D.P.E. Pipe and Fittings
Plant Water System
Plant Lights
10' x 25' Attrition Drum
Qty 3 12" Multi Stage Verticle Turbine Pump
Qty 2 Air Compressors
Qty 4 Unused Eagle Sand Attrition Mill (Duel 40 HP)

Please contact Mickey Jones at (303) 514-1403 email mickeyhk@hotmail.com or Greg Jones at (303) 885-2068 email greg@intermountaincrushers.com for further information. Also visit our website for equipment descriptions, map, hotel and car information. www.intermountaincrushers.com

Note: Each of the conveyors mechanical components (frame, bearings, shafting, gear boxes, take-ups, etc.), except motors are designed for 950 STPH for the 30" wide conveyors (1300 STPH for 36" wide conveyors) with an incline of 18 degrees. The exception to this are as follows: Overland conveyors (C-61, and C-62) were designed for 950 STPH for the 30" wide conveyors with a lift 25 feet; Reject Transfer conveyor was designed with a lift 30 feet; Tunnel conveyor (C-23) was designed with a lift 50 feet; Screen Overs Transfer conveyor (C-48 was designed with a lift 30 feet; and Zone 3 Transfer conveyor (C-55) was designed with a lift 40 feet;. All conveyor motors are were sized by taking the belt tonnage listed in each of the conveyor descriptions times 125% and then increased one size to have better cooling because of the altitude.

These descriptions were prepared to the best efforts of IMCE using information provided by others. We encourage all potential purchasers to inspect the equipment and verify the details. IMCE is acting as a broker only and there is written or implied warranty for the above equipment. It is the customers responsibility to verify descriptions and condition of the equipment.